



# THE OFFSET

May 2013

Webpage <https://sites.google.com/site/cocssok/>



*Echinocereus reichenbachii subsp. baileyi* in the Wichita Mountains NWR, Oklahoma. Mount Scott in the background. Photo by Michael Douglas

## NEWSLETTER OF THE CENTRAL OKLAHOMA CACTUS AND SUCCULENT SOCIETY

### OFFICERS

<b>President:</b>	Niki Furrh	tnfurrh@cox.net 405-722-1718
<b>Vice-president:</b>	Rosario Douglas	<a href="mailto:rosariod@cox.net">rosariod@cox.net</a> 405 447-7617
<b>Secretary;</b>	Mary Kaser	MCKaser@west.com 405-476-0600
<b>Treasurer:</b>	Peggy Anglin	anglin@swbell.net 405-840-4583
<b>Librarian:</b>	Tony Furrh	tnfurrh@cox.net 405-722-1718
<b>CSSA Affiliate:</b>	Joyce Hochtritt	cactibud@cox.net 405-7371831
<b>Newsletter editor:</b>	Rosario Douglas	<a href="mailto:rosariod@cox.net">rosariod@cox.net</a>

**MEETING** At Will Rogers Garden Center at 3400 NW 36<sup>th</sup> in Oklahoma City, the third Thursday of every month at **7:00 pm** (except in January, the month of our show, picnic and December).

### IN THIS ISSUE

- ❖ Club News pp 2-8
- ❖ 2013 Local cactus& succulent happenings pp 9
- ❖ Article of the month pp 10-12
- ❖ Blooming Namaqualand pp 13-14
- ❖ What is blooming? pp 15
- ❖ Succulent Plants pp 16-18
- ❖ The Botanical corner pp 19

**CLUB NEWS- FROM THE PRESIDENT**

President's Message  
May, 2013

**On With the Show!**

It's MAY and this is our last monthly newsletter and meeting before the Annual Show & Sale June 1st and 2nd. A lot of us have several Shows and Sales under our belt now and are pros at finding things that need doing and just go ahead and do them! Everyone's efforts are greatly appreciated!! I'm going to list the things below I can think of (& who might have said they will oversee or help with) and others things that just need 'doing' when you get there.

**SET UP** is terribly important - beginning at 11:00am and closing around 5:00pm when the last vendor trails in.

We will need tables set up for the Silent Auction, Reception Desk, Drawing Items, misc sales area, vendor areas, cashier/check out areas, winter hardy, Show Area, kitchen food area. All tables will need covering with table paper or other clothes provided & items 'set up' for display. Banners put up.

Vendor assistance is a personal choice (& not asked of members) but they really do appreciate any help and the sooner done, the sooner we get out of the building for the evening!

Joyce is setting up Show plants & all members should have your Show plants at the WRGC ASAP so staging can be done. REMEMBER - our Annual SHOW & Sale begins with SHOW, and the public looks forward (& EXPECTS) to seeing these mature gorgeous plants before heading to the Sale area. (Judges this year will be Joyce, Tony and Mike Keeling. Joyce will step back when her plants are up for judging and Tony will do the same with his. CLERKS will be needed to assist the judges and this is a fun way to learn a little more about the judging process & the plants.)

**HOSPITALITY** is going to be overseen by Peggy Holland who will be sure the early birds on Saturday have a little refreshment & drinks to get started on the judging. Ed Vermillion is going to supply us with ice and drinks for the weekend again - kudos Ed!

**CASHIER'S Area** will be headed by our multi-talented treasurer, Peggy Anglin and what she says goes!

**SALES AREA** will be over-seen by Niki. I'll need lots of help deciding where to place various tables, etc. and make the place look half-way 'professional' - and work best. Robert Milligan will be our Floor Manager and do his 'directing' with whatever he needs - lights, runway signs etc. Robert is pretty much with it on whose plants are whose so he can get answers for those needing them and help keep the isles open and carts available with assistance from all of us!

Any member wishing to sell at the Sale needs to sign a Member Vendor Contract and you can download this on line & send to me or get one at the May meeting. We will have a Club's Plant Sale section on one of the tables for sale plants but a Member Contract must be filled out unless you are donating all proceeds to the club directly.

**HANDOUTS** will be easily accessible as usual to the public and Tony will be helping getting these organized and copied.

**PEOPLE'S CHOICE** will be in play again this year and seems to be a favorite for a lot of our visitors. Mary Kaser will be handling this.

**SIGNAGE** will be another important item this year with the MS Conference in 2014 and I will try to get this done. Last year we placed several signs on corners during the event for additional advertising and we'll try this again. Large poster signs on walls seemed to help direct traffic so we'll give this another go this year. Joyce has been putting up the sign at the entrance to the WRGC.

**SILENT AUCTION** - Ed Vermillion has volunteered to handle the silent auction this year and he has a lot of experience with this with the rock club. All members are encouraged to donate an item (or items!) for the auction and you can bring these items to the May monthly meeting or to the Garden Center by 9:00am Saturday am. Any items would be gratefully accepted and all funds (misc any expenses) from this will go into the MS Conference 2014 fund. Books, decorative items, plants, garden items, pictures, antique items...

**EDUCATIONAL DISPLAYS** will be judged by Joyce Hochtritt and it would be great to have a minimum of at least two of these to play off each other for the trophy she has to give out from the CSSA.

**DRAWINGS** - Hourly drawings (or until everything is gone!) will be held again. This year we will be handing out one FREE drawing ticket and encouraging visitors to buy additional tickets at \$1 each or 6 for \$5. Joan Galbraith and I have been trying to keep an eye out for some nice drawing items and members are being asked to donate an item or two for this. The prizes will be on display to encourage ticket purchases and all tickets will be thrown out after each drawing to 'up' their chances of winning. All proceeds (minus expenses) will be put into the MS Conference 2014 fund.

**POTTING STATION** - Fred Hill is going to man the potting station this year with help from us all! If a visitor buys a pot, soil, and a plant they can get free potting services. Tickets for this will be available at the Cashier's table after purchases are paid.

**LUNCHEON** will be at noon on Saturday with Jim Hochtritt getting ribs and briskets. We have all done this before so simply bring a side dish and/or dessert and enjoy the company!!

*The club will need all kinds of assistance during the Show & Sale weekend as mentioned above; recap below:*

<b>Set up on Friday!!!</b>	<b>Help with registration at the front door!!!!</b>	<b>Help with selling</b>
<b>drawing tickets &amp; assisting visitors with the People's Choice</b>	<b>Help removing stickers off</b>	
<b>purchases for cashiers! LUNCHEON! Assisting visitors with purchases, answering questions</b>	<b>Help</b>	
<b>&amp; finding answers for questions!!</b>	<b>Announcing Drawing Ticket Winners!</b>	<b>Help</b>
<b>with Potting Station!!!!</b>	<b>Help with Silent Auction!!!</b>	<b>Corralling boxes &amp; carts!!!</b>
<b>Clean up Sunday!!!</b>		

# Cactus & Succulent Show & Sale

Saturday, June 1, 2013, 9:00am-5:00pm

Sunday, June 2, 2013, 9:00am-4:00pm

Will Rogers Exhibition Center

3400 NW 36th St., Oklahoma City, Oklahoma

405-943-0827

More information: 405-737-1831 or Cactibud@cox.net

Central Oklahoma Cactus & Succulent Society

<https://sites.google.com/site/cocssok/>

"Free Admission"



We will be offering thousands of cactus and succulents for sale. Also pottery, books, potting soil, & other items. Members will be available for advice on growing plants.

Buy a Plant, Pot, Soil and we will pot it up for you!

Remember that if you need to make copies to give out to friends you can find this flyer (put together by Joyce Hochtritt) under the section 2013 Show&Sale. On webpage at:

<https://sites.google.com/site/cocssok/>.



## Festival in the Park

Our club, along with many other plant clubs, will be participating in the Festival in the park at the Will Roger Gardens **on May 18<sup>th</sup>**. We will have a canopy and table outside and will set up around 8 pm. The festival goes until 3 pm so you are welcome to come any time before 3 pm. On the garden's site you can read: This annual celebration combines a plant and gardening materials sale with free horticulture seminars, floral design, and entertaining kids activities. Great for the entire family.

## Seminar Schedule:

- 10 a.m. "Theme Gardens" ~Kathie Webb
- 11 a.m. "Earthworms" ~Kim Paddyacre
- 1 p.m. "Basic Rose Care" ~Jamie Ashmore
- 2 p.m. "Organic Gardening"
- 

Walking tours of the Will Rogers Garden will take place at 9:30 a.m. and 11:00 a.m.

Please wear comfortable footwear. Tours are ADA accessible and open to persons in wheelchairs.

## *COCSS May 16<sup>th</sup> Program*

***“Getting Show Ready Show preparation/potting workshop.”***

**Where:** At the Will Rogers Garden Center- Oklahoma City

**Time:** 7 pm

### **Also**

- Book reviews by Peggy Anglin

- Don't forget to check out a book if you want to volunteer to review it for future meetings.

Refreshments by: Fred Hill



*Mammillaria deherdtiana*  
By Michael Douglas

**CLUB NEWS***by Mary Kaser*

Meeting called to order at 8:00 PM CST

12 Members present.

**Refreshments:** Provided by Peggy Anglin

**Treasurer's Report:** Year-to-date Treasury total: \$4,377.35

**Librarian report:** Presented by Tony Furrh. We now have the new Sansevieria Journal and the New CSA Journal #2, 2013 available for members.



**Program:** *The Weird, Wild and Wacky*. Members brought their favorite plants that had a strange appeal to them. Plants were presented for their different forms, colors, texture, size, and just their plain strangeness/weirdness. Participates were Joyce Hochtritt, Fred Hill, Tony Furrh, Deb Trimble and Mary Kaser.

**Book Review:** Presented by Robert Millison. Title: Palms Won't Grow Here and Other Myths: Warm-Climate Plants for Cooler Areas, by David A. Francko.

Robert described the conditions of how and where to plant palms, the type of palms that work for our zone 7 area (Oklahoma) and his own experiences working with planting palms outdoors. Stop by his home during our Garden tour on June 8<sup>th</sup> and he will show you the palms he has planted outside!

**Old Business:**

- The March, 2013 minutes were approved by members.
- Review of the Norman Garden Event which was on April 13<sup>th</sup>, 2013. Club members; Mike and Rosario Douglas, Fred Hill and Mary Kaser participated. Members answered plant questions and passed out flyers describing our club and invites to our June 1<sup>st</sup> & 2<sup>nd</sup>, 2013 show and sale. Our Member, Jean Hart from Chickasha, came by to enjoy the event by attending the farmers market & flea market and to wish us well. Thank you Jean!
- Our May 11<sup>th</sup>, 2013 member's only tour of homes is **cancelled**. We will discuss a new date and time at our next Meeting on Thursday, May 16<sup>th</sup>.
- The Public tour of homes will be June 8<sup>th</sup>, 2013 9:00 am – 3:00 PM. Mike & Rosario Douglas, Robert Million, Fred Hill and Tony Furrh will open their homes/greenhouses for public viewing.
- Our club will participate in the Festival in the Park May 18<sup>th</sup>, 2013. We will set up our table around up 8:00 am. We will have an outside table, canopy and plants for public viewing only. Members Mike and Rosario Douglas, Nikki and Tony Furrh, Fred Hill and Mary Kaser have already volunteered to participate.

**Club news continued...**

- We have flyers available to any members who wish to take and disburse to friends, family or co-workers for our June 1<sup>st</sup> and 2<sup>nd</sup>, 2013 show and sale.
- Member Joyce Hochtritt will send our vendor contracts for the June 1<sup>st</sup> and 2<sup>nd</sup> Show and sale. Please let us know if you are going to participate in selling plants and wish to receive a contract. We will mail or email you one. Please call Niki (722-1718) or Joyce (737-1831) for additional information.
- Fred Hill has volunteered to be the club spokesperson at the Open House for the new Patience S. Latting Northwest Library in Oklahoma City on April 20<sup>th</sup>, 2013. Also attending will be Tony and Niki Furrh.

**New Business:**

- We reviewed our upcoming June 1<sup>st</sup> & 2<sup>nd</sup>, 2013 show and sale. President Niki Furrh reviewed the responsibilities of each member who were assigned a post within the sale. We will be mailing our cards out by May 15<sup>th</sup>. Set up is scheduled for Friday May 31<sup>st</sup>, 2012 from 11:00 am to 5:00 PM. Any member that wishes to help is always welcomed. For this year's luncheon, the meat will be provided by Jim Hochtritt and each member is asked to bring a side dish or a dessert.
- Member Fred Hill presented an excel spreadsheet way of tracking your plant inventory. It was very interesting and if you are a member who has a large or small collection of plants, call Fred (794-4160) to ask how to set up an inventory system within your computer.
- Fred Hill will provide refreshments at our next meeting May 16<sup>th</sup> and Peggy Anglin will provide a book review.

Meeting adjourned at 8:45 PM CST.

## From the editor;

Joyce has sent me the 2013 general rules for the 2013 Show&Sale.

You can see this information in the section "2013 Show&Sale" on our webpage. You can also download the entry forms for the Show. Our webpage is: <https://sites.google.com/site/cocssok/>

\*\*\*\*\*

**Correction:** Dear Readers; I would like to add a correction to the article about tequila published in last month's newsletter. Liliana Cracraft from the Houston Cactus and Succulent Society, kindly sent me some information about pulque and mezcal. Mezcal was mentioned briefly in the Tequila article and I wrote that Agave tequilana is also used to make this drink. Lilina informed me that A. tequilana is not used to make mezcal, instead A. augustifolia, A. esperrima, A. weberi, A. potatorum, and A. salmiana are the Agaves used in the production of mezcal.

\*\*\*\*\*

**Please note that the May 11<sup>th</sup> Garden tour for members only has been cancelled. We will be having the June 8<sup>th</sup> tour of member's gardens and greenhouse.**

\*\*\*\*\*

## CSSA Austin Convention

Hi All,

This is just a reminder that reservations for the 2013 Convention should be in. We have the opportunity to extend the early price for two additional weeks. The final date to take advantage of the reduced "Early Registration" fee is **now** May 15, 2013.

Please get in touch with whoever your communication person is for your club and have them advise the membership.

Our lineup of presenters has never been better. This is the one chance in two years to see so many experts in one place at one time.

Here's the Convention Web Site address: <http://cssa2013.com/>

Registration is easy and can be completed in a matter of seconds. You may also use the site to connect directly with the hotel and make reservations at a very low price when compared with current prices at the Sheraton.

We hope to see many of your members at the Convention!

Buck Hemenway

Ph: 951-360-8802

## CACTUS AND SUCCULENT HAPPENINGS IN THE REGION *By Joyce Hochtritt*



### **May 16th 7 pm COCSS monthly meeting.**

**Program:** Getting Show Ready. Show preparation/potting workshop.

Hosts Joyce Hochtritt and Fred Hill

Extra Activity: Book Review

Refreshments: Fred Hill

**May 18<sup>th</sup>** 9-3pm, COCSS will be participating in the Festival of the Park event located at the Will Rogers Center. Outside Setup will begin at 7:00 AM for Vendors and any members that wish to participate can meet at 8:00 AM

**June 1-2** **COCSS Show & Show and Sale.** Will Rogers Exhibition Center  
No regular meeting.

**June 8** COCSS garden tour of member's gardens/greenhouses for the public.  
Hours 9-3 pm

**June 8-9** Tulsa Cactus and Succulent Society Show

**June 15-20<sup>th</sup>** CSSA 35<sup>th</sup> Biennial Convention in Austin, Texas <http://cssa2013.com/>

**July 18** **7 pm COCSS Monthly meeting**  
At the Will Rogers Exhibition Center, 3400 NW36th St., OKC, OK.

**Program:** **7 pm Deserts of North America** by Mike and Rosario Douglas

Extra Activity: Book Review

Refreshments: Peggy and Helen Hill

### **2014 Cactus and Succulent Happenings**

**June 12- 15<sup>th</sup>** The 15<sup>th</sup> Biennial Mid-States Cactus and Succulent Conference Hosted by the Central Oklahoma Cactus and Succulent Society in Oklahoma City, OK. More information to come!

If you know of any plant happenings, please send me the information.

Thank you, Joyce

## ARTICLE OF THE MONTH

by Rosario Douglas

**Namaqualand land of flowers and succulents**

Namaqualand is an arid winter rainfall area located in the northwest corner of the Western Cape province of South Africa and Namibia that covers a total area of about 170,000 square miles. Namaqualand is considered part of the succulent Karoo and it is highly influenced by winter rainfall and fog. (from "Namaqualand, a Succulent Desert" by R. Cowling and S. Pierce).



Map on the left shows South Africa and map on the right show a close-up view of the Namaqualand area in South Africa (worldatlas.com and Wikipedia).

Lower right photo shows traditional Nama housing. Wikipedia Commons. Photo by Andrew Hall.

The name probably refers to the Nama group. The Nama or Namaqua are the largest surviving group of the Khoikhoi people that originally inhabited this area. They inhabit South Africa, Namibia and Botswana. In the past Namas were largely nomadic, although today many are employed as farm workers. They speak a Khoisan language notable for its clicking sounds. (Wikipedia)

Namaqualand forms part of the only arid hotspot in the world due to the richness of its succulent flora. (A **biodiversity hotspot** is a biogeographic region with a significant reservoir of biodiversity that is under threat from humans. **Biodiversity** is the degree of variation of life forms within a given species, ecosystem, biome, or planet). (Wikipedia)



Kuboes, Richtersveld

More than a third of all succulent species *in the world* are found in this area (Wikipedia). Some characteristics of the flora include the "dominance of communities by dwarf to low, shallow rooted, short-lived and drought sensitive leaf succulent shrubs; high abundance and diversity of geophytes and high local and regional plant diversity" (taken verbatim from a paper in the 1999 plant Ecology journal titled Namaqualand, South Africa-an overview of a unique winter-rainfall desert ecosystem by R.M. Cowling, K.J. Esler, P.W. Rundel (<http://link.springer.com/article/10.1023/A:1009831308074#page-2>))

Plant diversity in this area is high, about 3000 species in 648 genera with 107 families. This is four times more species than those found in similar size areas with similar winter rain regimes found in the Americas, North Africa and the Middle East. Another important aspect of the Namaqualand flora is that about half the plants found in this area are endemic (not found anywhere else on Earth).



Some of the habitats found in Namaqualand include the Richterveld where a National park and a World Heritage Site protect some of this habitat. The Richterveld is home to succulents such as *Aloe pillansii*, *Pachypodium namaquanum* and many others.

Another well-known

succulent habitat in Namaqualand is the Knersvlakte, an area where white quartz pebbles cover the ground. This area is home to genera such as *Argyroderma*, *Conophytum*, *Euphorbia*, *Anacampseros*, *Tylecodon*, *Fenestraria*, *Glottiphyllum*, *Lithops*, *Crassula* just to mention a few. These plants are locally known as vygies in Afrikaans. (From Namaqualand, a Succulent Desert)



Upper left *Pachypodium namaquanum* (Wikipedia Commons, photo by Winfried Bruenken). The other 4 photos show the Knersvlakte. Note middle left photo, it looks like there is nothing there but rocks. Then once you start walking you see what the picture with the glasses show. How many *Argyrodermas* do you see? (at least 32 – blow up image to see them.) Lower left: a *Argyroderma* and size 6 ring. Photos by Mike and Rosario Douglas



Other important areas within Namaqualand include the granitic hills of the central Hardeveldt, the massif of the Kamiersberg uplands and the large sandy area or Sandveld along the coastal plain (from: *Namaqualand a Succulent Desert*).

Besides the succulent shrubs and non-shrub succulents, bulbs also play an important role in the Namaqualand flora. The town of Nieuwoudtville, known as the bulb capital of the world, is a popular destination with tourists during the wild flower season. Depending on the rains, springtime brings an incredible show of flowering bulbs of many kinds.

A 2010 press release about the flowers read:



*PRLog (Press Release) - Jul. 16, 2010* - This year, the arid terrain of Namaqualand is expected to come to life in a dramatic burst of color. From the depths of the semi-arid landscape, dry, dusty and lifeless for most of the year, thousands of wildflowers will burst to life to cover the landscape in color.

This eruption of color seems to disappear as quickly as it arrived, and thousands of visitors stream into Namaqualand to view the spectacle before it's too late.

(source: <http://www.prlog.org/10799164-surprise-at-the-namaqualand-flower-festival.html>)

(Note that press release makes the usual (mistaken) assumption of a "lifeless landscape" for most of the year, when in fact the cryptic succulents are always there and very much alive! Many of the Namaqua spring wildflowers that attract the tourists are actually annuals, not of succulent perennials.)



Photos from Wikipedia Commons

For an amazing selection of pictures of the flowering time see:

<http://www.kuriositas.com/2012/06/namaqualand-south-africas-daisy.html>

Succulent lovers will enjoy a visit to Namaqualand even if the plants are not blooming. Regions like the Knersvlakte are truly spectacular in the diversity and abundance of succulents. We have visited this region 3 times and we have not been disappointed with the beauty of the landscape, great food, friendly people, interesting fauna and the amazing succulents.

**Blooming Namaqualand***photos by Karel du Toit- Text by Karel and R Douglas*

Dear Readers:

Last year I received a request to include Mr. Karel du Toit in our newsletter mailing list. Mr. du Toit lives in Springbok, South Africa. Springbok is in the area known as Namaqualand, a succulent-rich area in Western South Africa that it is also known for spectacular floral displays in good rain years.

Karel has substantial knowledge of the flora of this part of South Africa and he has also traveled in Namibia. Photography and succulents are two of his interests. He has guided well-known authors of succulent books and this year will be a guide of succulent habitats for the trip to South Africa being organized by Guillermo Rivera of South America Nature Tours.

If you are planning to visit this part of South Africa you can contact Karel at [pillansii@telcomsa.net](mailto:pillansii@telcomsa.net)

Here are 3 photographs of plants that were blooming in April that Mr. Du Toit would like to share with our readers.



Above *Conophytum violaciflorum*. Karel writes: "this is hardly the only violet-flowered Conophytum, but it is one of the most elegant". Steve Hammer has found them around the Springbok area. Photo by Karel Du Toit



*Haemanthus* is a South African genus of plants in the family Amarylidaceae. A common name is blood lily. There are 22 known species endemic to South Africa, Namibia, Lesotho and Swaziland.

At least 15 species of *Haemanthus* are found in the Namaqualand area. In arid Namaqualand, these plants usually flower before the leaves appear. Plants in this genus produce good-sized bulbs. (Wikipedia)



Above *Haemanthus crispus*. Karel writes: one of the smallest *Haemanthus* species and approximately 10-15 cm high. You can find them in stony slopes growing in heavy and hard soils. Photos by Karel DuToit

Lower right is an illustration of *Haemanthus coccineus* by Nikolaus Joseph von Jacquin (1727-1817). (Source: Wikipedia Public domain)

## WHAT IS BLOOMING?



*Mammillaria deherdtiana* on the left.

*Euphorbia caput medusa* very close-up of the flowering stem tip (below).



The *Euphorbia* flower image on right is actually a composite of many photos put together with “Helicon focus” software to greatly increase the depth-of-field. Successive images are taken and the focus changed slightly between each image, then the software merges all the images to produce one image sharp over a great depth-of-field. (the entire flower cluster is about 1 inch across)

(Photographed in our greenhouse by Mike Douglas.)



## SUCCULENT PLANTS

By Rosario Douglas



### The Genus *Manfreda*

Long time club member Jean Heart brought to my attention this genus as a possible subject for the “genus of the month” section of our newsletter. She mentioned that she wanted to know more about this genus and its relationship to *Mangave*. I must confess that I had never paid too much attention to this particular genus, but Jean’s comments got me curious and I decided to try to write a summary of what is currently known about this particular genus. This endeavor became a bit challenging when I got conflicting information about where this genus is placed by different botanists. Nevertheless I decided to write about what I found and it will become clear, as you read on, that there is no definitive classification for this genus. We must remember that the business of plant classification is not static and plants can be placed in one family one year and changed to another family the next depending on what the latest studies show.

The genus *Manfreda* is comprised of about 20-26 species of herbaceous plants with rosettes of plain green or mottled, often thick, succulent leaves. The name honors 14<sup>th</sup> century Italian writer Manfredus de Monte Imperiale. (Wikipedia)

The plants are found in Southeast and South Central United States, Northwestern Mexico to Honduras and El Salvador. Most *Manfredas* are found in Mexico growing on rocky and sandy slopes. (Source: Flora of North America – FNA Vol 26 Pages 413,414,463)

[http://www.efloras.org/florataxon.aspx?flora\\_id=1&taxon\\_id=119603](http://www.efloras.org/florataxon.aspx?flora_id=1&taxon_id=119603))



Some authors place *Manfreda* in the Agavaceae family while other authors place the genus in the Asparagaceae family. To make things a bit more confusing, other authors place plants belonging to the genus *Manfreda* in the genus *Polianthes* while other authors place both *Manfreda* and *Polianthes* under the Agavaceae family. *Polianthes* is a genus of 13 species of tuberous plants found in Mexico. Recent DNA studies appear to indicate that this genus should belong in the family Agavaceae. *Polianthes tuberosa* has a fragrant flower and it is the most commonly grown plant of this genus.

On the left *Manfreda maculosa*. Photo from Wikipedia Commons



Both *Manfreda* and *Polianthes* are herbaceous (plants that have leaves and stems that die down at the end of the growing season to the soil level. Herbaceous plants may be annuals, biennials or perennials) and bulbous (growing from a bulb), which is a characteristic that makes them different from *Agaves*. (Wikipedia)

Both genera lack persistent woody stems above ground. Flowers of *Manfreda* tend to be fragrant and are brown, yellow, green or white and are often tubular. They do well in full sun. Hummingbirds and hawk moths are frequent visitors to the flowers. Bats are also pollinators as is the case with *Manfreda brachystachya*. This particular *Manfreda* from Mexico is primarily pollinated by little long-nosed bats. (from: The Southwestern Naturalist 32(2):169-178 June 15, 1987. Article by Luis Eguiarte and Alberto Burquez.)



Hybrids of *Manfreda* and *Agave* are known as Mangave. (Source: Central Texas Gardener)

<http://www.klru.org/ctg/plant/name/Manfreda/>



Upper left: *Polianthes tuberosa*. Illustration by John Sims (1746-1799) year 1816. (Wikipedia public domain.)

Lower right: Mangave (Bloodspot) A hybrid between *Agave macrocarpa* and *Manfreda maculosa* (photo from San Marcos grower website).

Lower left: Manfreda "Macho mocha" X Mangave (Photo from Dave's garden.com)



Even though she is not sure of the species name, Jean would like to share two of her Manfredas with us.

She has had these plants for 3-4 years and has only recently brought them out of her garage where they spend their winters.

Photos by Jean Heart



## THE BOTANICAL CORNER

by Rosario Douglas

**Glaucous**

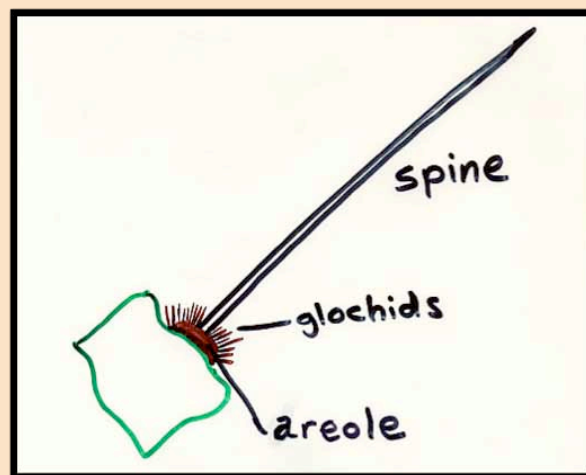
Possessing a smooth, blue-white, blue-green or blue-grey bloom.

**Globose**

Shaped like a globe  
(Photo of *Epithelantha micromeris* by Michael Douglas)

**Glochid**

Sharp, barbed, hair-like spines found in the areoles of cacti in the genus *Opuntia*.



On the left close up view of a glochid. On the right an illustration showing the relationship between areole, glochids and spines. Taken from online course on integrative Biology 335  
<http://www.life.illinois.edu/ib/335/>

**Glutinous**

Sticky-glue like

I have compiled this glossary using information from: The Cactus Museum at [www.CactusMuseum.com](http://www.CactusMuseum.com), Wikipedia, A glossary put together by John Chippindale of Leeds England, CactiGuide.com at <http://cactiguide.com/glossary/> and Cactuspedia at <http://www.cactuspedia.info/index.htm>.