



THE OFFSET

September 2016

WEBPAGE <https://sites.google.com/site/cocssok/>



Echinocereus reichenbachii subsp. *baileyi*
in the Wichita Mountains NWR, Oklahoma.
Mount Scott in the background. Photo by
Michael Douglas

NEWSLETTER OF THE CENTRAL OKLAHOMA CACTUS AND SUCCULENT SOCIETY

OFFICERS

- President:** Niki Furrh tnfurrh@cox.net
405-722-1718
- Vice-President, newsletter editor and web master:** Rosario Douglas rd501983@gmail.com
405-447-7617
- Treasurer:** Peggy Anglin angling@swbell.net
405-840-4583
- Librarian:** Tony Furrh tnfurrh@cox.net
405-722-1718
- Secretary:** Robert Millison
robert.millison@yahoo.com
- CSSA Affiliate:** Joyce Hochtritt cactibud@cox.net
405-737-1831

Meeting: Third Thursday of the month at 7 pm. At the Will Rogers Garden Center at 3400 NW 36th in Oklahoma City (except for the month of our Show&Sale, picnic and Christmas party).

IN THIS ISSUE

- | | |
|---|--------|
| Club News | pp 2-3 |
| Cactus and Succulent Happenings in the region | pp 4 |
| On the Web | pp 5-6 |
| Article of the month | pp 7 |
| Succulent Plants | pp 8-9 |
| The Botanical corner | pp 10 |

Hi everyone,

I am writing this short message on behalf of our president Niki Furhh, who has been ill. Niki was in the hospital recently for better pain management, but Joyce reports:



Niki is back home. Better pain management now. Surgery (hip surgery) will be September 8th. Tony is being a good boy and taking good care of her!!!

We all wish Niki a speedy recovery and hope to see her at our future meetings.

Last month's meeting did not take place as there was a mix up with the reservation of the room for our meeting. This month we have our annual picnic (see details on pp 3) instead of the regular meeting.

The renovations will begin this month at the gardens, thus our regular meeting for October and November will now take place at the Senior Citizen's Center near the gardens. The books from the club's library have all been taken to Tony's house until further notice from the gardens.

The October and November meetings will be at the Senior Citizen Center adjacent to the Will Rogers Garden Center. The center is at 3505 Pat Murphy Dr. near the tennis courts. There is parking at the site. The meeting in October and November will be at this location at the usual time, 7 pm.

Let Joyce know if you are coming to the picnic and don't forget to bring a chair.

Rosario Douglas
Vice-president



On the left an illustration of *Opuntia aciculata* by Mary Emily Eaton (1873-1961). From *The Cactaceae* (1919-1923) by Britton et Rose, Vol. I. From Wikipedia.



Annual COCSS Picnic



When: September 15

Where: At Joyce's house. 600 N. Pine St. Phone: 405-737-1831

Time: Members are welcome to arrive between 6 and 7pm if you want look through the greenhouse. We will start eating about 7 pm

What to bring: Bring you own drink and a desert. Joyce has a refrigerator in the shop. Please **bring your own chairs.**

Other Activities: Joyce's greenhouse will be open for sales. Members can also bring plants to repot and Joyce can help you. Joyce will have a tip bucket! **Joyce requests that you let her know if you are coming. Her email is: cactibud@cox.net**



2016 CACTUS AND SUCCULENT HAPPENINGS IN THE REGION *by Joyce Hochtritt*



September 15 **Annual Picnic and Member Greenhouse Tour & Sales at Joyce's 737-1831**

Will set up in the garage - bring a plant or two needing to be repotted perhaps from the Show & Sale? Sales available in greenhouse, Mexican buffet!

October 20 Central Oklahoma Cactus&Succulent Society monthly meeting at 7 pm. At the Senior citizen center at **3505 Pat Murphy Dr.**

Program: Bring a plant or two-Show and tell.

Refreshments: Peggy Holland

November 17 Central Oklahoma Cactus&Succulent Society monthly meeting at 7 pm. At the Senior citizen center at **3505 Pat Murphy Dr.**

Program: Joyce Hochtritt will present a program to be announced.

Refreshments: Peggy Anglin

Elections: We are having elections in October and we need candidates to replace Tony as the librarian and Peggy Anglin, our treasurer.

Consider volunteering for these positions and remember that Peggy will tutor and train her replacement over the next year.

On the Web

Central Oklahoma Cactus and Succulent Society Facebook Page

The screenshot displays the Facebook page for the Central Oklahoma Cactus & Succulent Society. The page layout includes a top navigation bar with options like 'Page', 'Messages', 'Notifications', 'Insights', 'Publishing Tools', 'Settings', and 'Help'. On the left, there's a sidebar with a cover photo of pink cacti, the page name 'Central Oklahoma Cactus & Succulent Society', and a navigation menu with links to Home, About, Likes, Photos, Reviews, Videos, Events, Posts, and Manage Tabs. The main content area shows a post by Jack Suman, who shared a photo of a Saguaro National Park landscape. Below this, there's a shared post from the same society about the park. The right sidebar contains an 'ABOUT' section with a map, address (3400 NW 36th St, Oklahoma City), phone number, and website link. It also features 'PAGE TIPS', a 'PHOTOS' gallery, and a 'VIDEOS' section.

If you have not checked the club's Facebook page, take a look at:

<https://www.facebook.com/Central-Oklahoma-Cactus-Succulent-Society-548561558626999/>

From the Web

This is a digital journal with many interesting articles. It is free and you can sign up for emails or you can download it.

The publishers of this digital magazine describe it as:

“The Essex Succulent Review is available quarterly at the beginning of March, June, September and December.

The emphasis is on non-technical articles on all aspects of cacti and succulents. Written by growers, for other growers, the Essex Succulent Review is an informative and enjoyable read.”

Essex Succulent Review

Essex Succulent Review

September 2016



[Home](#) | [Back issues 2016](#) | [Back issues 2015](#) | [Back issues 2014](#)

Essex Succulent Review

The Essex Succulent Review is available quarterly at the beginning of March, June, September and December.

The emphasis is on non-technical articles on all aspects of cacti and succulents. Written by growers, for other growers, the Essex Succulent Review is an informative and enjoyable read.

Current issue

Issue 10 – September 2016

 [Download](#)



Eriosyce (Neochilenia) chilensis
Photo: Graham Evans

Included in this issue

Like it or lump it – Madagascan caudiciforms
by Al Laius

Gardening with succulents Part 5
More smaller succulents
by Paul Spracklin

The day of the Triffid (Euphorbia venenifera)
by James Gold

Eriosyce, etc: A symphony of synonyms
by Graham Evans

Graham has prepared a checklist of Eriosyce species names to accompany his article Eriosyce, etc: A symphony of synonyms.

Download this [here](#)

Please note – the pictures on this site and the articles included in the Essex Succulent Review are copyright and may not be reproduced without permission.

Subscribe

If you would like to subscribe to the Essex Succulent Review please [email](#).

You will receive an email, with an attached pdf, as soon as each issue is available.

A subscription is completely free and you can unsubscribe at any time.

Back issues

The Essex Succulent Review online commenced in June 2014. All the back issues are archived on this site.

[Back issues 2016](#)

[Back issues 2015](#)

[Back issues 2014](#)

The Essex Succulent Review was previously published in hard copy for 50 years. As well as a range of informative articles it also includes information on activities in Zone 15 of the BCSS.

I hope you will find the Essex Succulent Review of interest. Comments and feedback are always welcome - please [email](#).

BCSS

The British Cactus and Succulent Society is for anyone interested in cacti and succulents.

For more information visit

[BCSS](#)

[BCSS Zone 15](#)

You don't have to live in Essex to read it!

Article of the month

Changes in latitude – a walk through the Baja Gardens by Dona Parham

This is a good article by Dona Parham and it is about the Baja gardens at the San Diego Zoo. If you ever find yourself in San Diego a visit to their Safari Park (name changed in 2010 from Wild Animal Park) is a must. This is where the Baja gardens is located and it forms part of the large botanical exhibits at the park. There are many nice specimens of cacti and succulents growing outdoors given the mild Southern California weather. You can read the article at:

<http://zoonooz.sandiegozoo.org/zoonooz/changes-in-latitudes/>



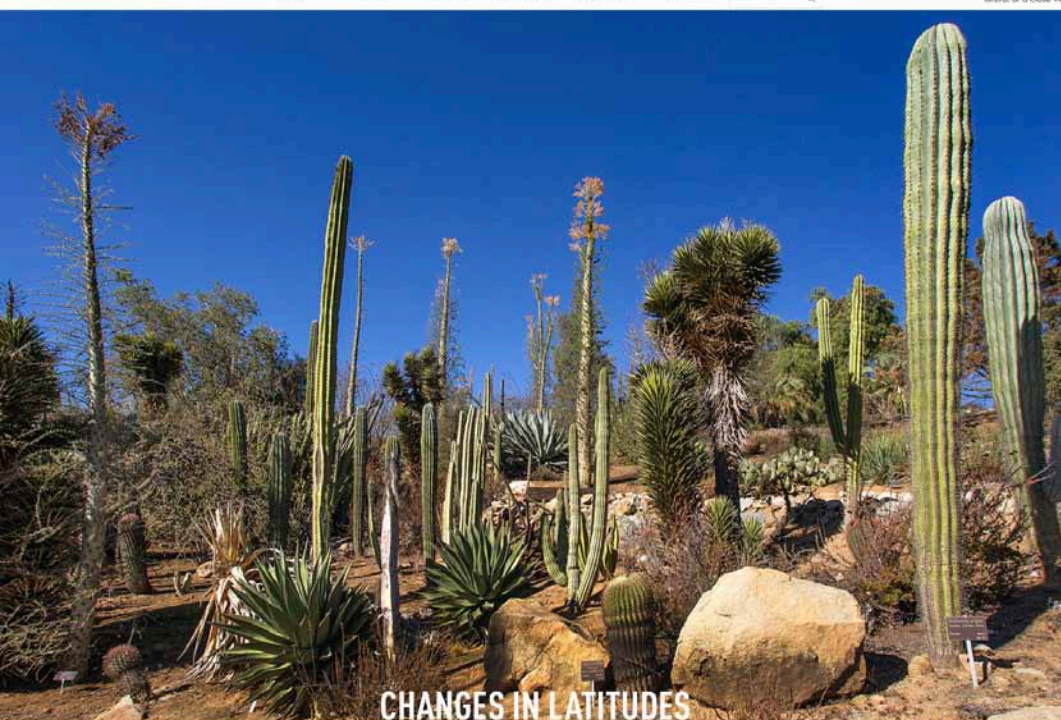
BAJA BEAUTIES

As you might expect, cacti large and small flourish throughout the Baja Garden. You'll find vigorous specimens of the organ pipe cactus *Stenocereus* sp. (labeled with its Spanish name, *pitaya*), prickly pear *Opuntia littoralis*, and candelabra cactus *Myrtillocactus cochal*. Barrel cactus *Ferocactus gracilis* var. *coloratus* adds a pinkish-to-reddish spot of color.



THE BAJA IN OUR BACKYARD

Visitors to the Safari Park's Baja Garden may see (clockwise, from top left) candelabra cactus *Myrtillocactus cochal*, cardón *Pachycereus pringlei* in bloom, lomboy *Jatropha cinerea*, yellow blooms of the barrel cactus *Ferocactus acanthodes*, palma de abanico *Washingtonia filifera*, or a close view of the barrel cactus *Ferocactus gracilis* var. *coloratus*.



CHANGES IN LATITUDES

A STROLL THROUGH THE BAJA GARDEN

BY DONNA PARHAM

SUCCULENT PLANTS by *Rosario Douglas*



The genus *Gasteria*



The genus *Gasteria* is native to South Africa and Namibia. The larger number of species is found in the Eastern Cape Province of South Africa with some outliers in Swaziland and Namibia.

The inspiration for the name *Gasteria* comes from the stomach shape of the flowers. The Latin word “gaster” means stomach. Some common names such as ox-tongue also refer to the flower shape. *Gasteria* flowers have a unique stomach-shape and they are arranged in a hanging raceme.

Another recognizable feature of *Gasterias* is their leaves which are very hard, thick and tongue-shaped. The leaves can range in size from one inch to a foot.

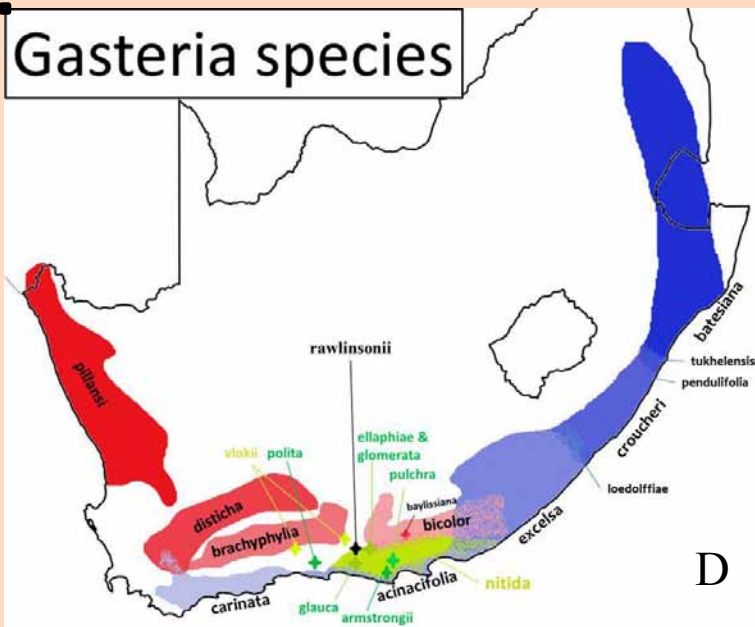


A. *Gasteria nigricans* by Maria Moninckx (1673-1757). From the Moninckx Atlas. Public domain.

B. *Gasteria disticha*. Photographed in the Little Karoo by Mike Douglas.

C. *Gasteria bicolor* flower. Photographed at Addo National Park by Mike Douglas.

Gasteria species



D

The genus is in the family Asphodelaceae and some closely related genera are *Haworthia* and *Aloe*.

Gasteria exhibit great variability in the field making it difficult to agree on how many species of *Gasteria* exist. Plants of the same species can look very different depending on the age, soil and location. To complicate matters *Gasteria* species hybridize naturally in the wild. Current studies appear to indicate that the genus has between 16 and 23 species.

Gasterias grow in well-drained sandy soils in light shade. Though mostly grown from seed, leaf cuttings will work for propagation. The genus is popular in cultivation and can tolerate some shade and sparse watering.

You can read more about *Gasterias* at: <http://davesgarden.com/guides/articles/view/2915#b>



E

D. Distribution map of the various *Gasteria* species and subspecies in Namibia South Africa and Swaziland. By S. Molteno, July 2015. Wikipedia Creative Commons.

E. *Gasteria bicolor*. Photographed by Mike Douglas in Addo National Park, South Africa.

F. *Gasteria batesiana*. By Stan Shebs. Wikipedia creative commons



F

Sources: Wikipedia and Dave's Garden.

THE BOTANICAL CORNER

by Rosario Douglas

Diadematous: Crowned

Dichotomous: Forking equally; as when the stem divides into two equal branches.

Dicotyledon: A plant having two cotyledons or seed leaves.

Dieback: The progressive death of a stem from the tip due to damage or disease

Diffuse: Widely or loosely spreading

Digitate: Divided like the fingers of a hand



Dimorphic: Having two forms.

Dioecious: Species that have male and female plants, i.e. the flowers on a particular plant will have only male or female organs and plant of the opposite sex is required in order to produce seed



Terms from a book by W. Taylor Marshall and R.S. Woods. The book is titled, **Glossary of succulent plant terms**, published in 1938., Wikipedia. Also terms from CactiGuide.com at <http://cactiguide.com/glossary/>.

Illustrations from Wikipedia.